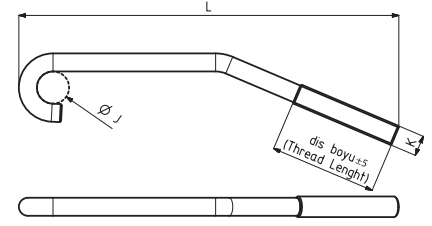


411

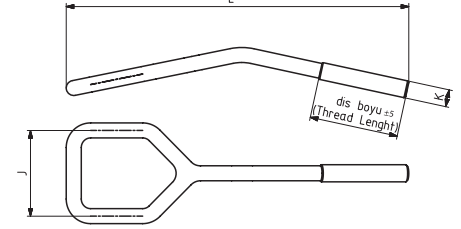
C Kanca
C Hook



KOD	MODEL NO	PASLANMAZ (STAINLESS)	SİYAH (BLACK)	AĞIRLIK (WEIGHT) (gr ±%2)	J	K	L	DİŞ BOYU (Thread length)
150 - 69	411-412 - 2	S 150-69	B 150-69	23	9	M6	122	50
150 - 13	411-412-413 - 3	S 150-13	B 150-13	54	12,5	M8	152	40
150 - 44	411-412 - 4	-	B 150-44	110	16	M10	197	55

421

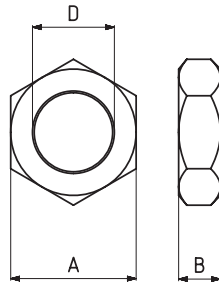
C Kanca
C Hook



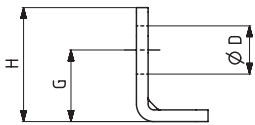
KOD	MODEL NO	PASLANMAZ (STAINLESS)	SİYAH (BLACK)	AĞIRLIK (WEIGHT) (gr ±%2)	J	K	L	DİŞ BOYU (Thread length)
150-139	421-3	S 150-139	B 150-139	77	40	M8	159	40

510

Somun
Nut

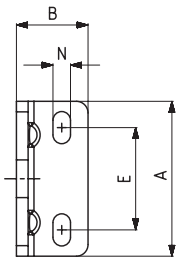
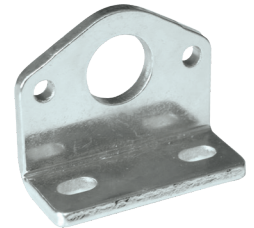


KOD	MODEL NO	PASLANMAZ (STAINLESS)	SİYAH (BLACK)	AĞIRLIK (WEIGHT) (gr ±%2)	A	B	D
150 - 327	511 - 0	S 511 -	B 511 -	11	17	6	M10 x 1
150 - 103	511-512-513 - 1	S 511 -	B 511 -	14	19	7	M12 x 1,5
150 - 74	511-512-513 - 2	S 511 -	B 511 -	19	24	8	M16 x 1,5
150 - 21	511-512-513 - 3	-	B 511 -	29	30	9	M20 x 1,5
150 - 50	511-512-513 - 5 - 6	-	B 511 -	62	36	10	M24 x 1,5

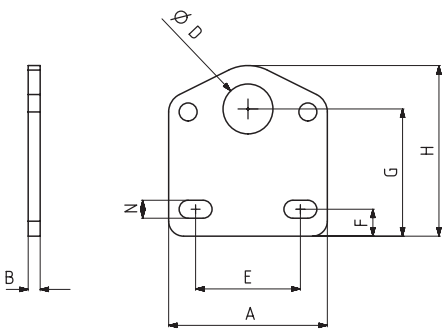


511

Yatay Taban
Horizontal Base



KOD	MODEL NO	PASLANMAZ (STAINLESS)	SİYAH (BLACK)	AĞIRLIK (WEIGHT) (gr ±%2)	A	B	Ø D	E	G	H	N
510 - 1 - 01	511 - 1	S 511 -	B 511 -	36	44	20	12,5	26,5	19,5	30,5	5,5 x 10,5
510 - 2 - 01	511 - 2	S 511 -	B 511 -	72	53	24,5	16,5	35	24,5	39	6 x 11
510 - 3 - 01	511 - 3	-	B 511 -	122	60	30	20,5	38	30,5	48	6,5 x 11
510 - 5 - 01	511 - 5 / 511 - 6	-	B 511 -	250	78	36	24,5	49,5	38	61	8,5 x 16



512

Dik Taban
Vertical Base



KOD	MODEL NO	PASLANMAZ (STAINLESS)	SİYAH (BLACK)	AĞIRLIK (WEIGHT) (gr ±%2)	A	B	Ø D	E	F	G	H	N
510 - 1 - 02	512 - 1	S 512 -	B 512 -	40	44	3	12,5	26,5	8,5	35	46	5,5 x 10,5
510 - 2 - 02	512 - 2	S 512 -	B 512 -	74	53	4	16,5	35	9	42,5	57	6 x 11
510 - 3 - 02	512 - 3	-	B 512 -	124	60	5	20,5	38	12,5	52	69	6,5 x 11
510 - 5 - 02	512 - 5 / 512 - 6	-	B 512 -	250	78	6	24,5	49,5	15	64,5	87,5	8,5 x 16